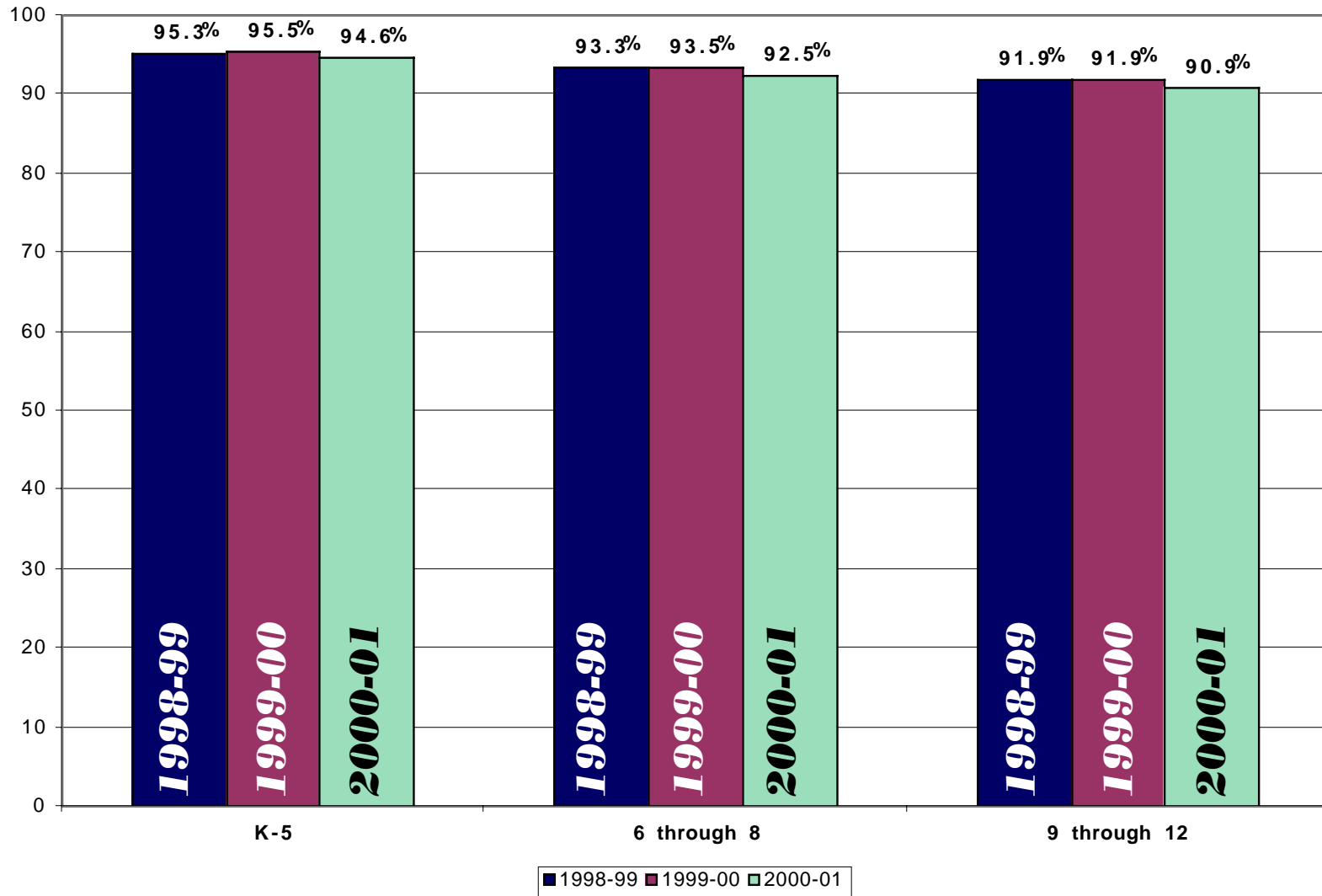


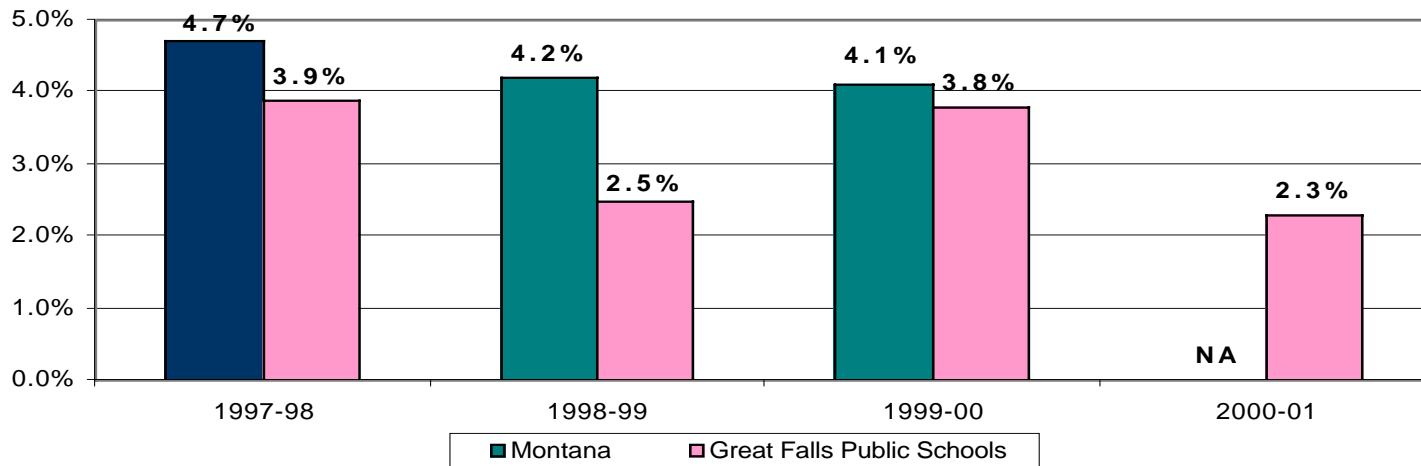
Attendance

Percent of Student Attendance

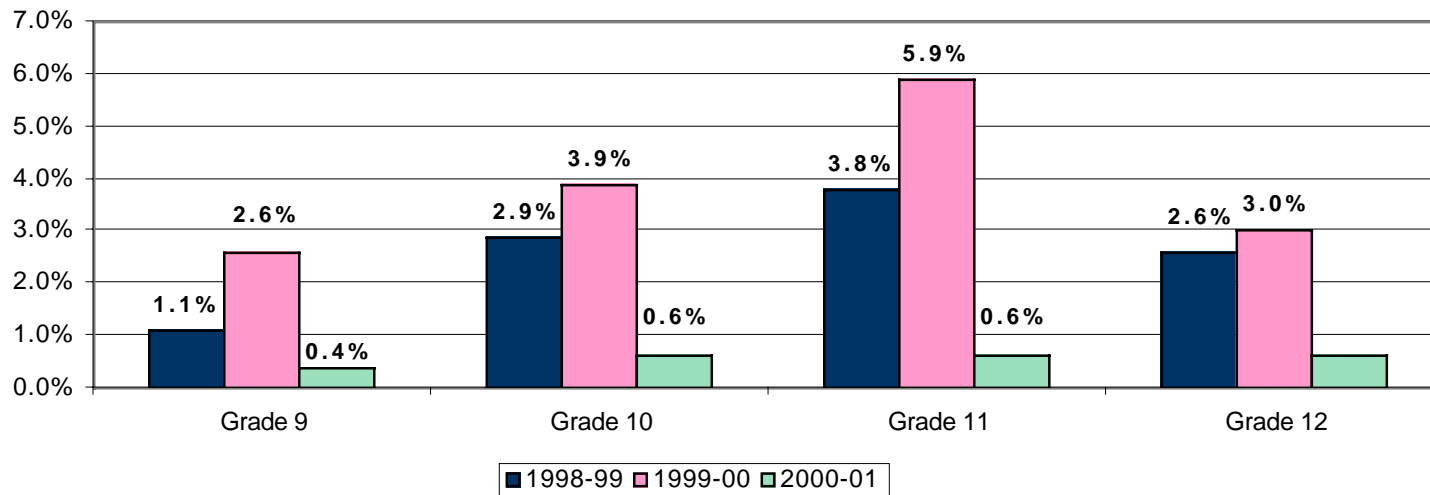


Dropout Rate Comparisons

Montana and Great Falls Dropout Rates

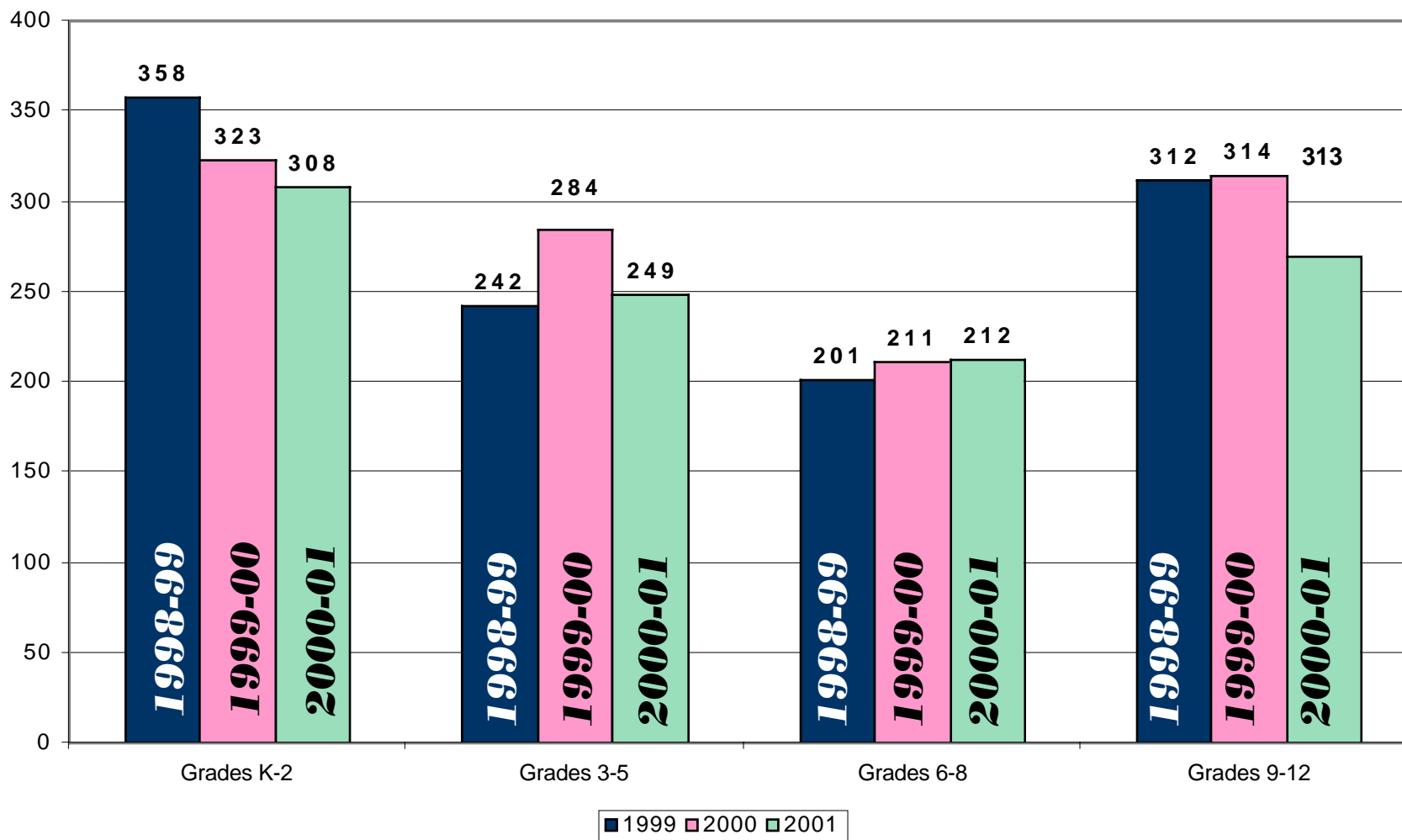


Great Falls Dropout Rate by Grade

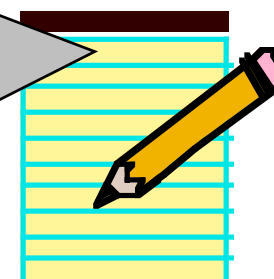
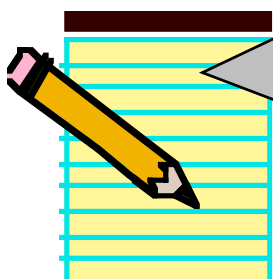


Summer School Enrollments

On the high-school level, 270 students attended summer school, but only 220 earned credit, some for multiple courses (288 semester credits earned total). Of those, 18 completed courses in order to graduate. At the elementary- and middle-school level, 1,347 students were provided the opportunity to attend summer school; of those identified, 769 attended while 605 either declined or did not show up.



Homework Expectations by Grade Level



*Following are recommended average time guidelines (based on a student's cumulative daily assignments) for student homework.**

KINDERGARTEN AND GRADE ONE

5–15 minutes
per day for two
to four days



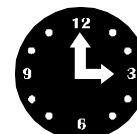
GRADE TWO AND THREE

15–30 minutes
per day for
three to four days



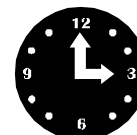
GRADE FOUR AND FIVE

30–60 minutes
per day for
three to four days



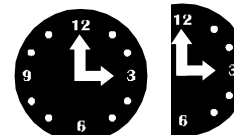
GRADE SIX

45 to 60 minutes
per day for
four to five days



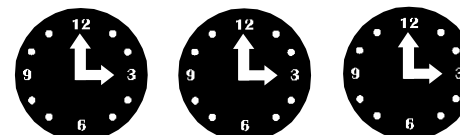
GRADE SEVEN AND EIGHT

45–90 minutes
per day for
four to five days



GRADES NINE THROUGH TWELVE

60–180 minutes
per day for
four to five days



**Board Policy*